

Valmatics 4.0

The market's only control system with an integrated simulator for all kiln models.



Intelligent control system for the new industry

Valmatics 4.0 is the world's leading control system. It's the only control system on the market that combines simulator technology with adaptive control, and calculates the optimal drying process, regardless of kiln model. The integrated simulator suits all kiln models and calculates the optimal drying process, making a fully autonomous lumber drying process possible.

Valutec conducts constant development of the system to continue honing both the user interface and system functions. Over time, this helps operators and sawmills alike work more efficiently and profitably.

Intuitive user interface

The user interface is intuitive and based on the latest lumber drying technology. With the aid of user-friendly settings and information developed from the data, the operator can easily optimize the drying process on the basis of selected parameters.

Valmatics 4.0 provides fast, simple troubleshooting with the presentation of trends, and can be connected to external systems such as a business system.

Future-proof

The new control system is suitable for the latest PLC technology, enabling operators to meet their customers' increased expectations and future quality requirements.

Property-centered control

Valmatics 4.0 has an improved and simplified property-centered control and is the only control system on the market that enables optimization based simultaneously on capacity, quality and energy consumption.

Optimized for TC continuous kilns

Today's powerful TC continuous kilns provide individual climate control in each zone. TC kilns consist of up to 14 zones, meaning that excellent system support is needed for the operator to make the most of each piece of lumber.

Valmatics 4.0 has the only simulator on the market for batch kilns and TC continuous kilns, offering control with full schedules in up to 14 zones at the same time. The operator only needs to know the characteristics of the lumber and the desired output quality, and the system takes care of the rest.

Constant development

Valmatics 4.0 is under constant development, and over time the system is upgraded with new functions. Among the functions added since its launch in 2019, is one that optimizes the interaction between drying and boiler load. Another important added function is the ability to optimize drying with regard to the electricity price on the spot market – a function that is all the more important in times when energy prices fluctuate so wildly.



Backward compatibility

Valmatics 4.0 is future-proof based on the latest technology, but is still designed to be reverse-compatible. This is to reduce costs in the event of an upgrade.

Based on Valutec's conviction

Better lumber drying improves the competitiveness of wood products, leading to the increasing use of wood. This is Valutec's inner driving force and the ultimate reason for our existence. We earn our place in the supply chain by making our customers profitable, and this inspires us to constantly develop innovative ideas.

Thus Valmatics 4.0 is a result of our philosophy.

Calculate your optimal drying process at the press of a button

Our lumber kiln

Choose between different dry kiln models connected to Valmatics 4.0.

Status

View the current status, transfer interval, and time to next input.

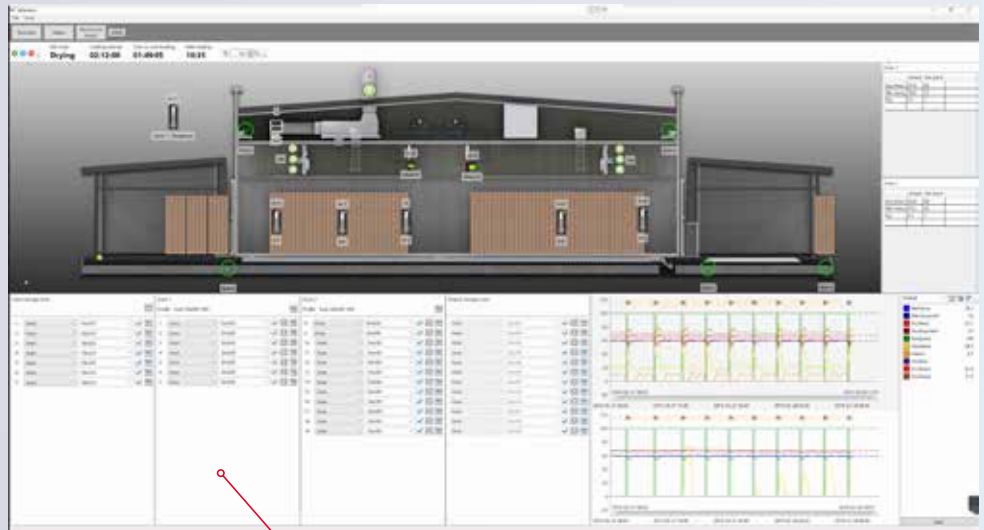
Zones

Complete drying schedules in up to 14 zones simultaneously. Refer to information about the batch number, time in the kiln, time remaining, dimensions and type of lumber.

Trend curve

Monitor the drying process in real time with the new display of trends, which simplifies troubleshooting.





Kiln display

In the drying scenario you can see information about the selected continuous kiln or batch kiln.

Configure the scenario

Possibility to add the desired sensors/signals, e.g. fans or temperature sensors.

Package feeding

Follow the package feed in different zones, the status of the feed motors and the safety light bars.

Trends in detail

Select a position in the trend curve to see detailed values. The feature is freely configurable and allows operators to create their own personal trends.

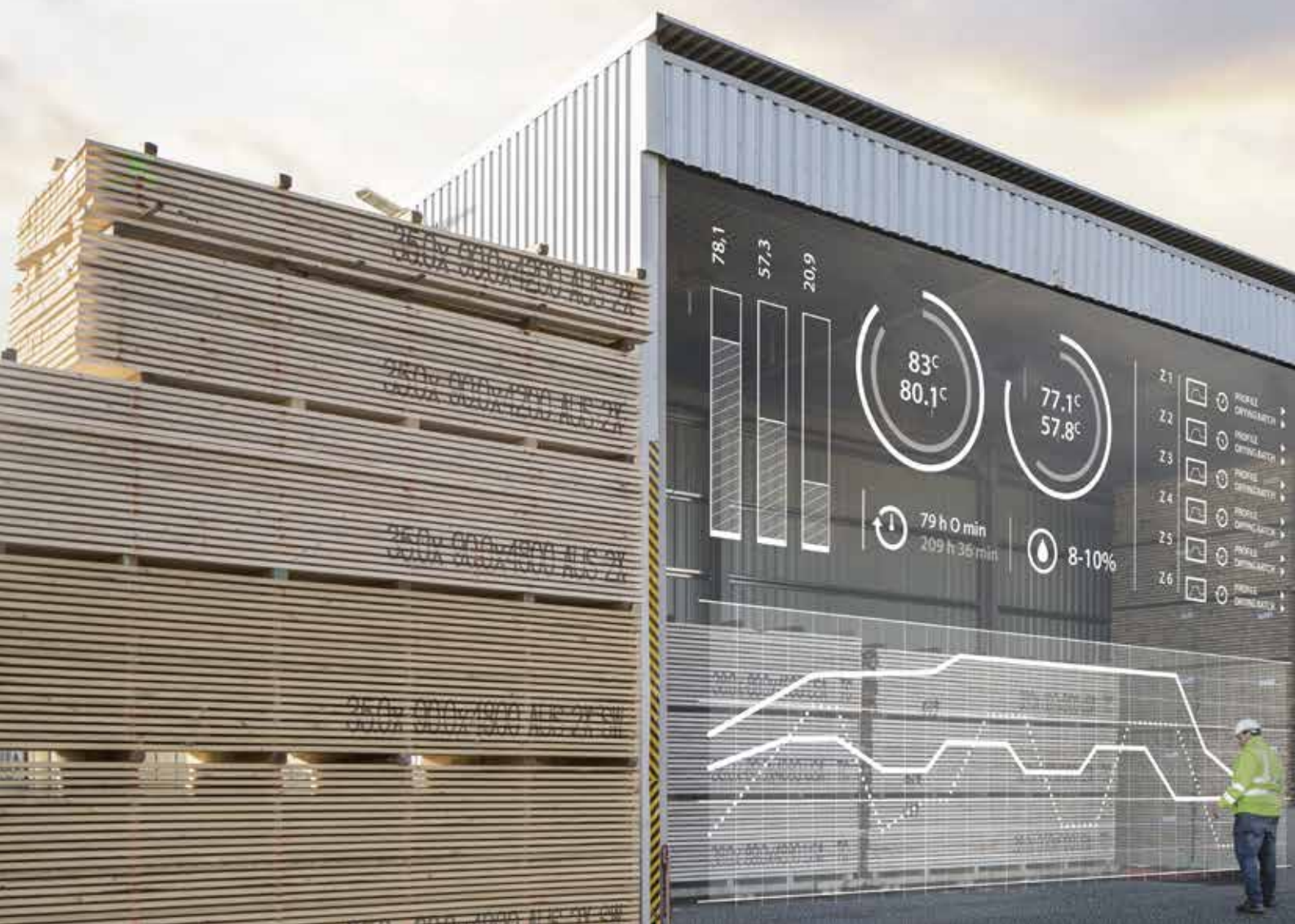
Simulator technology for all dry kiln models

Perfect drying from the first batch

Valmatics 4.0 offers the market's most advanced kiln simulator by far. The drying process constantly adapts to changing conditions, providing the right quality from the very first batch. The system also has contactless measurement that can calculate moisture content with an error margin of less than 1%.

Adapted for the TC kiln's flexibility

TC continuous kilns combine high capacity with great flexibility when it comes to mixing dimensions. The full potential of a TC continuous kiln can be exploited by using Valmatics 4.0 automation functions. These functions allow for lumber drying with complete schedules in up to 14 zones simultaneously with individual climate control for each zone.



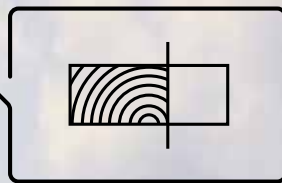
Automate and optimize the drying process

Valmatics 4.0 makes the lumber drying process flexible and cost-effective. The ability to connect to a business system allows the automatic creation of an optimal drying process without operator intervention. When necessary, the operator can then easily monitor the drying process with the help of the new trend curve. This frees up operator time for additional important operations such as planning, quality control and scheduling.



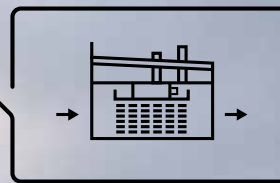
Business system

The customer's quality requirements are entered in the business system.



Simulation

The simulator calculates the optimal drying process.



Drying

The operator monitors the drying process in the platform.



SWEDEN

Valutec AB
Box 709
SE-931 27 Skellefteå
SWEDEN

Phone +46 (0)910 879 50
Fax +46 (0)910 879 59

valutec@valutec.se
www.valutec.se

FINLAND

Valutec Oy
Tehdaskylänkatu 11 A
FI-11710 Riihimäki
FINLAND

Phone +358 75 756 1401
Fax +358 (0)19 760 4440

valutec@valutec.fi
www.valutec.fi

NORTH AMERICA

Valutec AB
PO Box 447
East Longmeadow
MA 01028
USA

Phone +1 413-246-2881

robert.weithofer@valutec.se
www.valutec.ca



With nearly 100 years in the industry Valutec has developed drying equipment for the sawmill industry. Over the years we have delivered more than 4 000 wood dryers to customers all around the world. Valutec is Europe's largest supplier of wood dryers.

Valutec has established an extensive program for research and development. Close collaboration with leading researchers has resulted in continuous kiln dryers and batch kiln dryers which today are market leaders in terms of both quality and total economy. Additionally, Valutec's development of control system and simulator technology has resulted in value-adding solutions, making it possible to seize the full value of the raw material.

The Valutec Group AB includes Valutec AB, Skellefteå and Valutec Oy in Riihimäki, Finland. Collectively, the Group has a complete range of products based on Swedish and Finnish expertise in wood drying.